

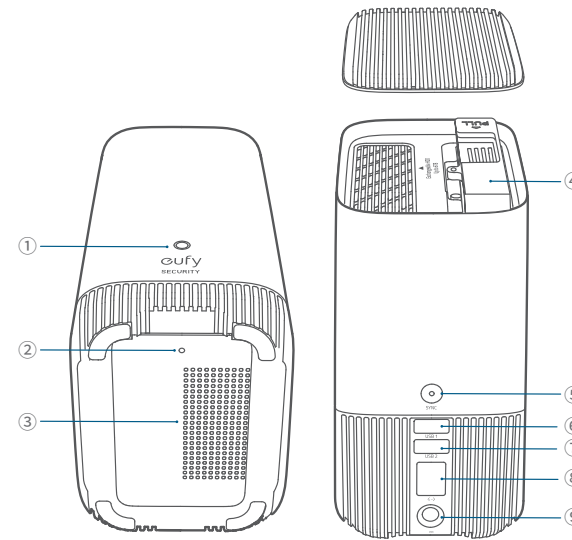
# S380 HomeBase

## QUICK START GUIDE

## AT A GLANCE

### S380 HomeBase

Model: T8030



- ① Status LED
- ② Reset Hole
- ③ Speaker
- ④ Hard Drive Bracket
- ⑤ SYNC / ALARM OFF Button
- ⑥ USB Port 1 (Output: 5Vdc/2.4A)
- ⑦ USB Port 2 (Output: 5Vdc/0.7A)
- ⑧ Ethernet Port
- ⑨ Power Port

01

## EXPANDING STORAGE (OPTIONAL)

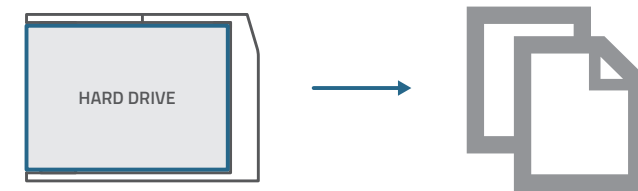
S380 HomeBase comes with 16 GB of storage for saving video recordings and allows you to add an additional hard drive to expand the space.

### Prepare Your Hard Drive

Your hard drive must meet the following requirements:

<b>Type</b>	Hard disk drive (HDD) or solid state drive (SSD) that uses the SATA interface
<b>Size</b>	2.5 inch
<b>Capacity</b>	Unlimited
<b>Recommended</b>	Western Digital, Seagate, SAMSUNG, Kingston, PNY, Crucial, SanDisk

⚠ Transfer all the data in your hard drive to a secure location before adding it to S380 HomeBase.

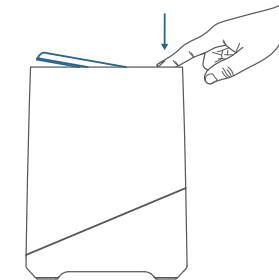


02

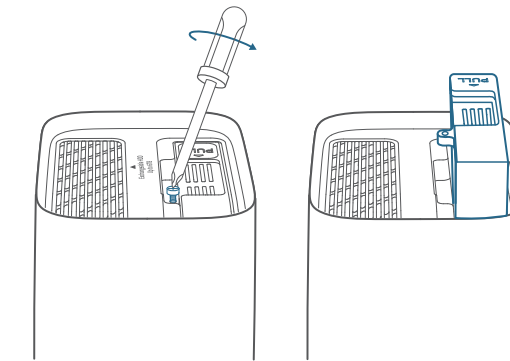
### Install Your Hard Drive

⚠ S380 HomeBase must be powered off when you install or remove a hard drive.

1. Push down the top lid to remove it.

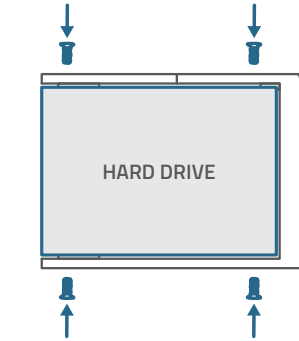


2. Loosen the screw, then pull out the hard drive bracket.

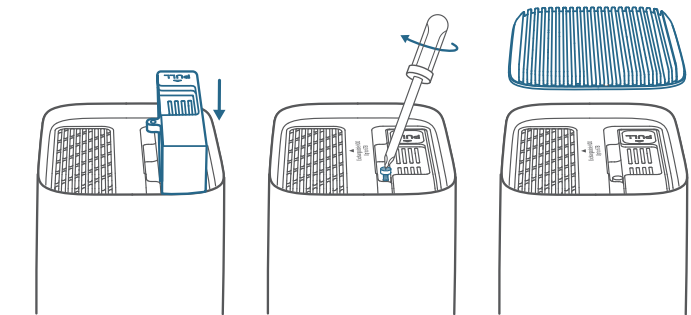


03

3. Fix your hard drive to the bracket with the provided screws.



4. Insert and screw the bracket back to S380 HomeBase, then put the top lid back into place.

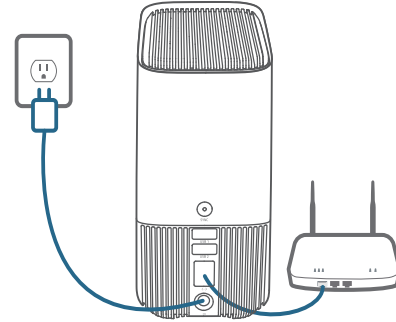


- You can follow the steps above to expand the storage whenever necessary.
- A new hard drive must be initialized through the eufy Security app to work with S380 HomeBase.

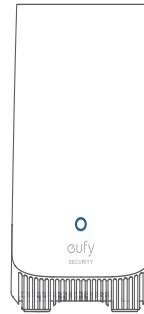
04

## CONNECTING S380 HOMEBASE

1. Power on and connect S380 HomeBase to your router.



2. Wait for a moment (up to 1 min) until the status LED turns blue.



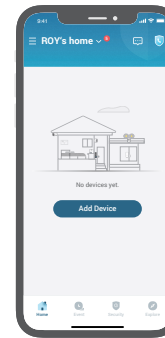
05

## ADDING S380 HOMEBASE TO EUFY SECURITY

1. Download and install the eufy Security app, and sign up for an account.



2. Add S380 HomeBase to your device list, and follow the in-app instructions to complete the setup.



06

## ADDING EUFY SECURITY DEVICES TO S380 HOMEBASE

Follow the in-app instructions to add your eufy Security devices to the S380 HomeBase.

- One S380 HomeBase can pair up to 16 cameras.

## SAFETY

- Do not use the device in the environment at a too high or too low temperature, never expose the device to strong sunshine or too wet environment.
- The suitable temperature for T8030 and accessories is -10°C to 45°C.
- It is recommended to supply the device in an environment with a temperature that ranges from 5°C~25°C.
- When supplying, please place the device in an environment that has a normal room temperature and good ventilation.
- The adapter shall be installed near the equipment and shall be easily accessible.
- Please ensure to use only the adapter offered by the manufacturer. Using unauthorized adapter may cause danger and violate the authorization of the device and the guarantee article.
- This adapter is for indoor use only. The adapter type (for S380 HomeBase) is KA2401A-1202000US, rated output voltage/current is 12 Vdc/2A. The plug is considered as disconnect device of adapter.

CAUTION: LITHIUM COIN CELL BATTERY. KEEP BATTERIES AWAY FROM CHILDREN. IF SWALLOWED OR PLACED INSIDE THE BODY, BATTERIES CAN CAUSE SEVERE OR FATAL INJURIES IN 2 HOURS OR LESS, SEEK IMMEDIATE MEDICAL CARE IF SUSPECTED.

07

## NOTICE

### NOTICE (United States of America)

#### FCC Statement

This device complies with Part 15 of the FCC Rules. Operation is subject to the following two conditions: (1) this device may not cause harmful interference, and (2) this device must accept any interference received, including interference that may cause undesired operation.

Warning: Changes or modifications not expressly approved by the party responsible for compliance could void the user's authority to operate the equipment.

Note: This equipment has been tested and found to comply with the limits for a Class B digital device, pursuant to Part 15 of the FCC Rules. These limits are designed to provide reasonable protection against harmful interference in a residential installation.

This equipment generates uses and can radiate radio frequency energy and, if not installed and used in accordance with the instructions, may cause harmful interference to radio communications. However, there is no guarantee that interference will not occur in a particular installation. If this equipment does cause harmful interference to radio or television reception, which can be determined by turning the equipment off and on, the user is encouraged to try to correct the interference by one or more of the following measures: (1) Reorient or relocate the receiving antenna. (2) Increase the separation between the equipment and receiver. (3) Connect the equipment into an outlet on a circuit different from that to which the receiver is connected. (4) Consult the dealer or an experienced radio/TV technician for help.

#### FCC Radio Frequency Exposure Statement

The device has been evaluated to meet general RF exposure requirements. The device can be used in fixed/mobile exposure condition. The min separation distance is 20cm.

#### Notice: Shielded cables

All connections to other computing devices must be made using shielded cables to maintain compliance with FCC regulations.

The following importer is the responsible party  
Company Name: POWER MOBILE LIFE, LLC  
Address: 10900 NE 8th St, Ste 501, Bellevue WA 98004  
Telephone: 1-800-988-7973

### NOTICE (Canada)

This device complies with Industry Canada licence-exempt RSS standard(s). Operation is subject to the following two conditions:

- (1) this device may not cause interference, and
- (2) this device must accept any interference, including interference that may cause undesired operation of the device.

Le présent appareil est conforme aux CNR d'Industrie Canada applicables aux appareils radio exempts de licence. L'exploitation est autorisée aux deux conditions suivantes:

- (1) l'appareil n' doit pas produire de brouillage, et
- (2) l'utilisateur de l'appareil doit accepter tout brouillage radioélectrique subi, même si le brouillage est susceptible d'en compromettre le fonctionnement.

This Class B digital apparatus complies with Canadian ICES-003.

Cet appareil numérique de la classe B est conforme à la norme NMB-003 du Canada.

#### IC RF Statement:

When using the product, maintain a distance of 20cm from the body to ensure compliance with RF exposure requirements.

Lors de l'utilisation du produit, maintenez une distance de 20 cm du corps afin de vous conformer aux exigences en matière d'exposition RF.



Your product is designed and manufactured with high quality materials and components, which can be recycled and reused.



This symbol means the product must not be discarded as household waste, and should be delivered to an appropriate collection facility for recycling. Proper disposal and recycling helps protect natural resources, human health and the environment. For more information on disposal and recycling of this product, contact your local municipality, disposal service, or the shop where you bought this product.

08



12-month limited warranty



United States  
+1 (800) 988 7973  
Mon-Sat 6:15AM-6:45PM(PT)  
Sun 6:15AM-5:45PM(PT)

United Kingdom  
+44 (0) 1604 936 200  
Mon-Sun 6:00-19:00

Germany  
+49 (0) 69 9579 7960  
Mo-Fr 8:00-16:00 Sa 9:00-16:00



support@eufylife.com



@EufyOfficial



@EufyOfficial



@EufyOfficial

Anker Innovations Limited  
Room 1318-19, Hollywood Plaza, 610 Nathan Road, Mongkok, Kowloon, Hong Kong

09

变更履历

1、V2 版本 P07 增加纽扣电池防吞食警示语

此页不印刷